



Blacksmiths Lane, Evesham, WR11 8TW

**SHELDON
BOSLEY
KNIGHT**

LAND AND
PROPERTY
PROFESSIONALS

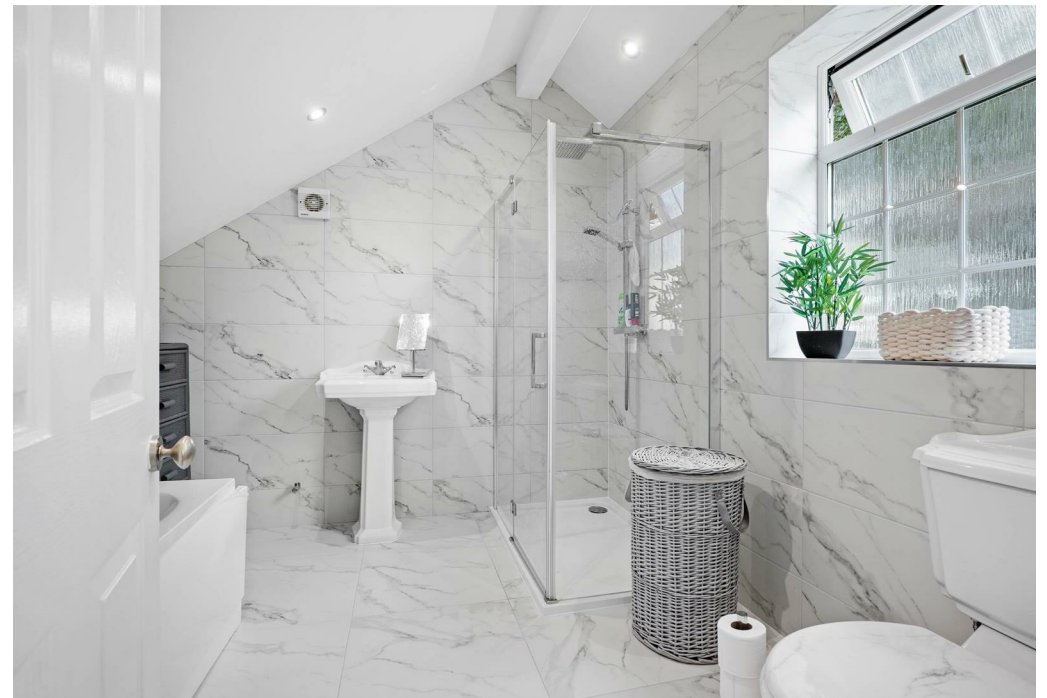
Property Description

**** FIRST CHANCE TO VIEW IS
MONDAY 18TH JULY - CALL TO BOOK
YOUR SLOT ****

*** A REAL HIDDEN GEM WITH THE
MOST BEAUTIFUL WALLED GARDEN

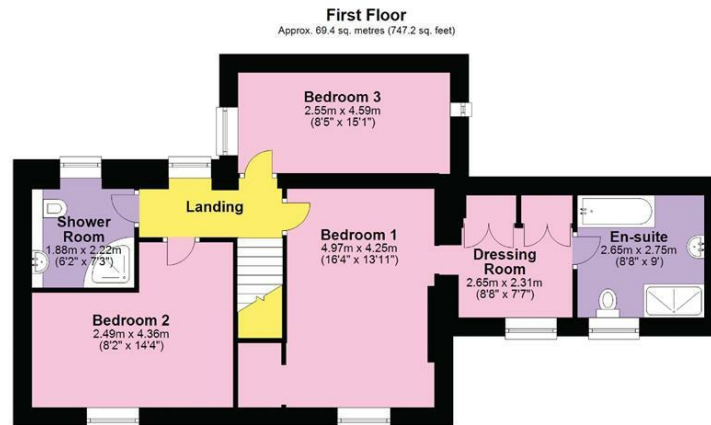
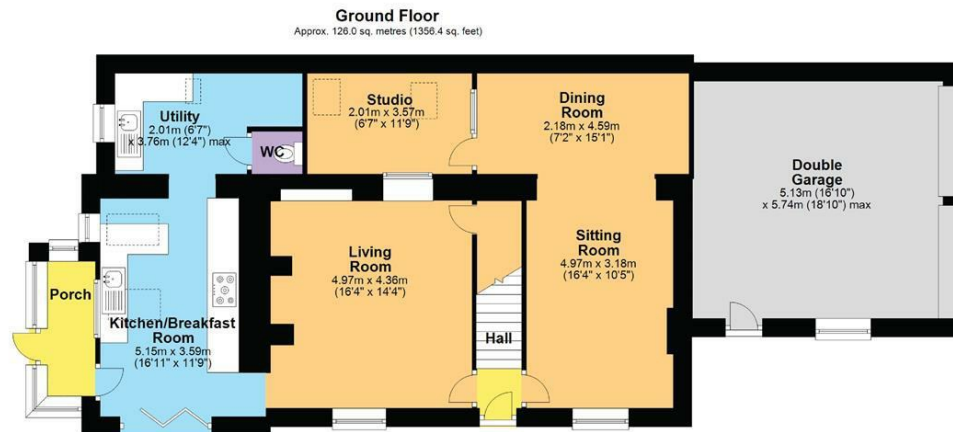
A truly fantastic opportunity to purchase a lovely characterful cottage tucked away in the highly sought after village of South Littleton. This hidden gem benefits from a spacious plot, double garage and ample parking - if you are looking for a beautiful family home with wonderful gardens then look no further. The property has been lovingly refurbished by the current owners and offers over 2,000 SQFT of flexible accommodation which really needs to be seen to appreciate all Jessamine Cottage has to offer! The property comprises; entrance hall, sitting room with exposed beams, dining room, studio, recently refitted kitchen/breakfast room, utility, w/c and porch. Upstairs benefits from three bedrooms, a family bathroom, the master benefitting from a dressing room and ensuite.





Key Features

- THREE BEDROOMS
- TWO BATHROOMS
- LOTS OF LIVING SPACE
- DOUBLE GARAGE
- MOST WONDERFUL GARDENS
- OOOZING WITH CHARACTER
- HIDDEN GEM
- REFURBISHED
- RECENTLY REFITTED KITCHEN AND BATHROOM



Total area: approx. 195.4 sq. metres (2103.5 sq. feet)

DISCLAIMER - Floor plans shown are for general guidance only. Whilst every attempt has been made to ensure that the floorplan measurements are as accurate as possible, they are for illustrative purposes only.

